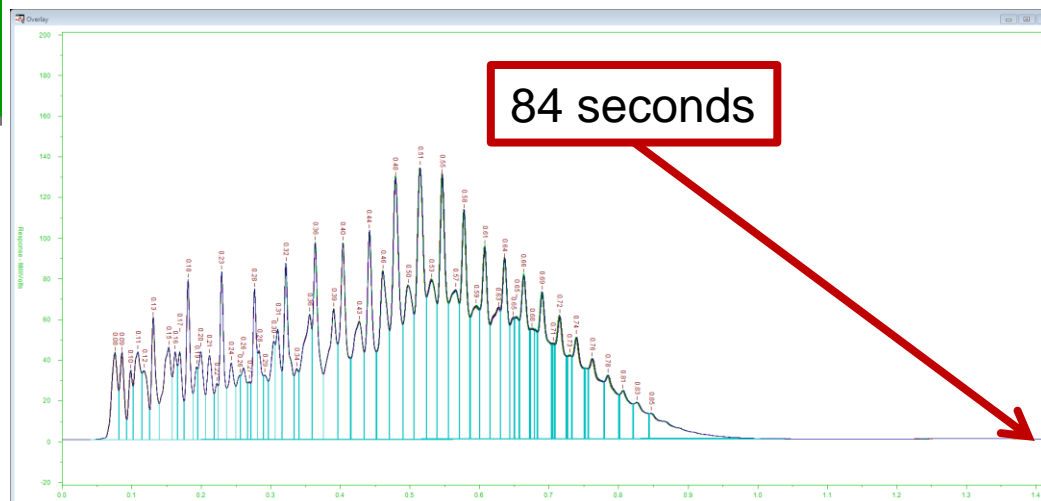


# Reference Gas Oil, 15 Replicates



Rep #	0.50%	5.00%	10.00%	15.00%	20.00%	25.00%	30.00%	35.00%	40.00%	45.00%	50.00%	55.00%	60.00%	65.00%	70.00%	75.00%	80.00%	85.00%	90.00%	95.00%	99.50%
1	241.3	304.6	349.1	394.8	436.5	471.3	500.0	527.3	553.5	577.5	594.6	610.7	629.3	648.7	668.6	690.1	712.8	737.2	765.3	804.4	885.6
2	240.5	304.4	349.1	394.9	436.8	471.3	500.3	527.7	553.6	577.7	595.0	611.1	629.7	649.3	669.1	690.6	713.3	737.7	766.1	805.3	886.9
3	241.0	304.4	349.2	394.7	436.8	471.3	500.5	527.8	553.5	577.5	594.6	610.7	629.1	648.8	668.5	690.3	712.8	737.0	765.3	804.6	885.7
4	240.5	304.5	349.1	394.9	437.0	471.4	500.4	527.7	553.7	577.6	594.7	610.9	629.3	648.9	668.6	690.5	712.9	737.2	765.7	804.9	888.8
5	240.9	304.4	349.3	395.0	437.1	471.6	500.4	527.7	553.9	577.6	594.8	610.7	629.3	648.7	668.6	690.2	712.6	737.0	765.5	804.9	886.2
6	240.6	304.3	349.0	394.6	436.7	471.2	500.2	527.3	553.4	577.3	594.4	610.5	629.0	648.7	668.4	690.0	712.6	736.8	765.2	804.7	887.6
7	240.7	304.4	349.2	394.8	436.7	471.2	500.0	527.3	553.3	577.4	594.5	610.4	629.0	648.5	668.3	689.8	712.4	736.7	765.0	804.0	886.8
8	239.5	304.1	349.1	395.1	437.3	471.6	500.4	527.5	553.4	577.3	594.6	610.4	628.9	648.5	668.3	689.9	712.3	736.6	765.1	804.4	885.5
9	240.5	304.5	349.3	394.9	436.9	471.5	500.5	527.6	553.6	577.3	594.6	610.5	629.1	648.7	668.7	690.4	713.0	737.2	765.4	804.4	885.8
10	240.8	304.6	349.4	395.1	437.3	471.8	500.8	528.0	553.8	577.6	595.0	611.1	629.5	649.2	668.9	690.5	713.1	737.2	765.3	804.7	887.7
11	240.8	304.4	349.4	394.8	437.1	471.7	500.7	527.8	554.0	577.7	595.0	611.1	629.7	649.3	668.9	690.4	712.8	737.0	765.1	804.4	885.4
12	240.9	304.5	349.1	394.9	437.0	471.5	500.4	527.6	553.4	577.4	594.6	610.4	629.1	648.5	668.3	689.8	712.4	736.6	764.7	803.8	885.0
13	241.0	304.6	349.4	395.3	437.3	472.0	500.9	528.1	554.0	577.6	594.8	610.5	629.0	648.5	668.3	689.8	712.4	736.8	764.9	804.0	885.4
14	241.0	304.5	349.1	394.9	436.8	471.4	500.5	527.8	553.8	577.7	595.0	611.0	629.6	649.0	668.8	690.5	713.0	737.4	766.0	805.2	886.7
15	240.7	304.5	349.4	395.2	437.6	472.1	501.1	528.1	553.8	577.5	594.7	610.7	629.0	648.9	668.6	690.4	712.9	737.4	765.7	805.4	888.4
AVE	240.7	304.5	349.2	394.9	437.0	471.5	500.5	527.7	553.6	577.5	594.7	610.7	629.2	648.8	668.6	690.2	712.7	737.1	765.3	804.6	886.5
SDEV	0.39	0.12	0.13	0.19	0.28	0.27	0.29	0.24	0.22	0.14	0.20	0.25	0.25	0.27	0.24	0.27	0.30	0.31	0.39	0.47	1.13
RSD	0.16%	0.04%	0.04%	0.05%	0.07%	0.06%	0.06%	0.05%	0.04%	0.02%	0.03%	0.04%	0.04%	0.04%	0.04%	0.04%	0.04%	0.04%	0.05%	0.06%	0.13%
Consensus	239	304	349	393	435	469	499	526	552	576	594	610	629	649	669	690	712	736	764	803	887
Difference	1.71	0.45	0.21	1.94	1.99	2.53	1.47	1.69	1.64	1.52	0.73	0.72	0.24	-0.19	-0.41	0.22	0.75	1.06	1.35	1.59	-0.50



- Initial BP = 241°F
- Final BP = 886°F
- Ave. Sdev = **0.30°F**
- Ave. RSD = **0.054%**
- Ave. Difference = **0.99°F**

